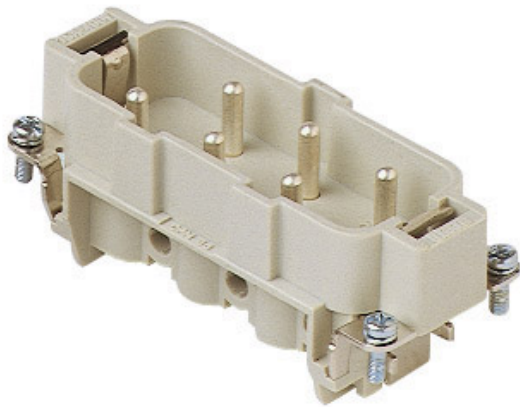




Part number  
**CPM 06**



**Brief description:**

male insert, 6 poles + PE, screw terminal connection, 35A, 400/690V, 6kV, 3, silver plated, size "77.27", CLASS insert series

Product description		Approvals / Standards	
<b>Model</b>	male insert	<b>Reference standard</b>	EN 61984 (2001-11)
<b>Version</b>	screw terminal connections	<b>Quality mark</b>	 , EAC
<b>Series</b>	CP	<b>Conformity</b>	CQC, CE
<b>Product type</b>	with male contacts	General ordering information	
<b>Family</b>	CLASS inserts	<b>EAN13 code</b>	8015747036894
<b>Size</b>	size "77.27"	<b>Tariff number</b>	85369095
<b>N. of poles</b>	6 poles + 	<b>Country of origin</b>	Made in EU (IT)
Technical data		<b>ETIM classification</b>	EC000438
<b>Current</b>	35 A (A.C. and D.C.)	Packaging Information	
<b>Voltage</b>	400 - 690 V	<b>Packaging length</b>	210,00 mm
<b>Rated impulse withstand voltage</b>	6kV	<b>Packaging height</b>	200,00 mm
<b>Pollution degree</b>	3	<b>Packaging width</b>	130,00 mm
<b>Wire cross-section</b>	1,50 mm <sup>2</sup> - 6,00 mm <sup>2</sup>	<b>Packaging weight</b>	1,89 kg
<b>AWG size</b>	16 - 10	<b>Packaging volume</b>	5,46 dm <sup>3</sup>
<b>Operating temperature range (min, max)</b>	-40°C ... +125°C	<b>Packaging description</b>	Carton box
<b>Contact type</b>	silver plated	<b>Packaging quantity</b>	20 Pcs
<b>Mating cycles</b>	≥ 500	<b>Packaging EAN code</b>	8015747036900
<b>IP degree of protection</b>	IP20 without enclosure; IP65/IP66/IP67/IP68 with enclosure	<b>Sub-packaging length</b>	197,00 mm
Further technical details		<b>Sub-packaging height</b>	35,00 mm
<b>Characteristics according to EN 61984</b>	35A 400/690V 6kV 3	<b>Sub-packaging width</b>	113,00 mm
<b>Insulation resistance</b>	≥ 10 GΩ	<b>Sub-packaging weight</b>	0,47 kg
<b>Rated voltage according to UL/CSA</b>	600V	<b>Sub-packaging volume</b>	0,78 dm <sup>3</sup>
<b>UL 94 flammability rating</b>	V-0	<b>Sub-packaging description</b>	Carton
<b>Weight</b>	48,15 g	<b>Sub-packaging quantity</b>	5 Pcs
		<b>Sub-packaging EAN barcode</b>	8015747036917

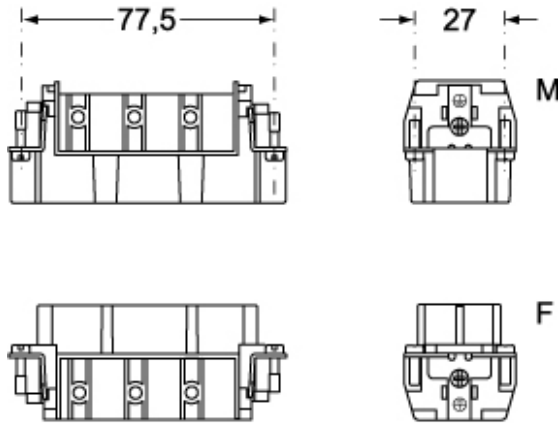
Part number

# CPM 06

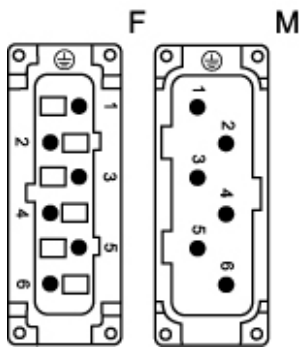


## Catalogue drawings

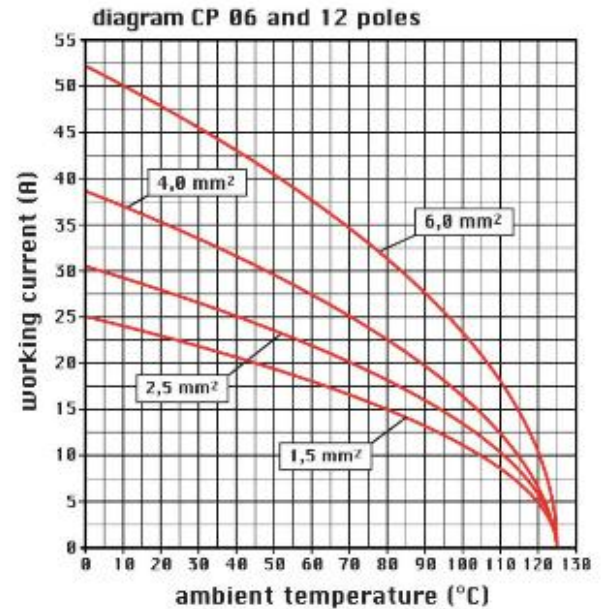
### CPM 06



### CPF 06



## Catalogue drawings



## Notes

### CPF/M 06 inserts

- characteristics according to EN 61984: 35A 400/690V 6kV 3
- UL, CSA, CCC, GOST certified
- rated voltage according to UL/CSA: 600V
- insulation resistance: > 10 GOhm
- ambient temperature limit: -40 °C ... +125 °C
- are made of self-extinguishing thermoplastic resin UL 94 V0
- mechanical life: > 500 cycles
- contact resistance: < 0,5 mOhm
- inserts with plate, for section conductors: 1,50 ÷ 6 mm<sup>2</sup> - AWG 16 ÷ 10
- conductors stripping length: 10.5 mm
- terminal screw torque: 1.2 Nm
- enclosures: size 77.27:

C-TYPE IP65/IP66

C7 IP67 stainless steel lever

V-TYPE IP65/IP66 stainless steel lever

T-TYPE IP65 insulating

JEI zinc-plated steel lever

BIG hoods

W-TYPE aggressive environments

EMC

central lever

IP68

- panel supports: COB